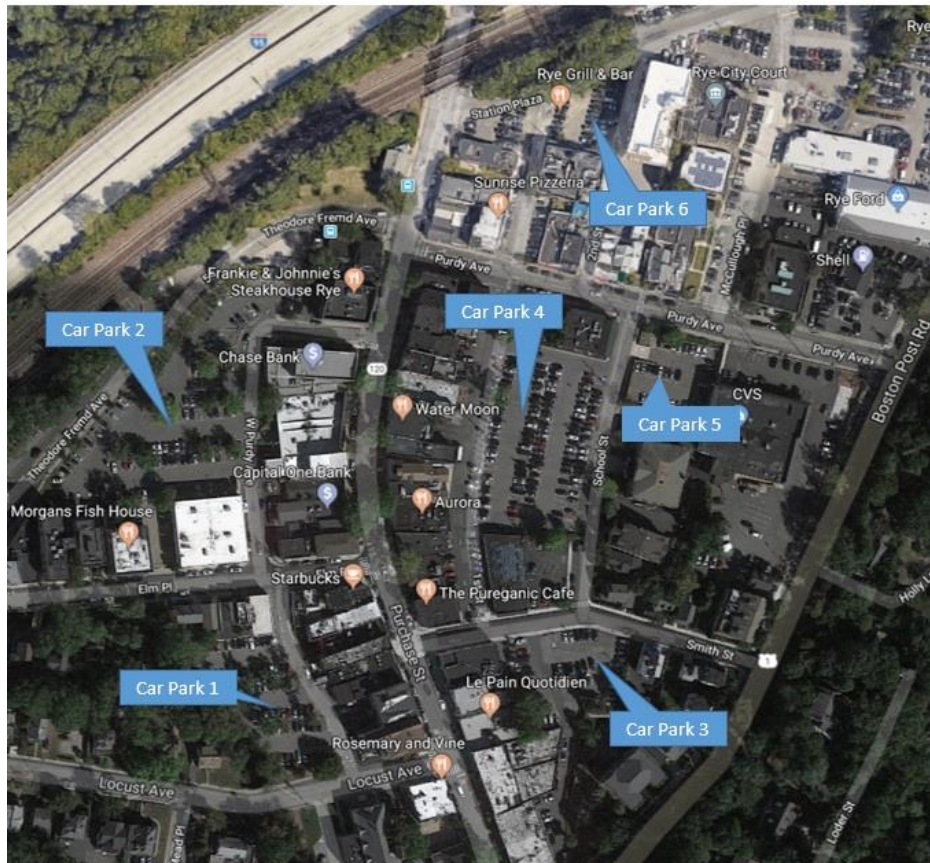




Dear Rye Merchants:

Enacted into law by the City Council in January 2007, cars with Merchant Permits cannot park in the rows closet to the stores. The spaces affected by this new law are:

Car Park	Space Numbers
1	1-2, 20-23, 43-46, 70-71
2	80-84, 158-161, 197-202, 237-238, 245-252
3	315-332
4	488-519, 534-533
5	550-557
6	Any 12 hour parking spaces



Any person with a merchant permit who parks in these spaces will be required to comply with rules that apply to non-permit holders (i.e. you will have to pay the appropriate meter fee and remain in the spot for only two hours). The law was enacted to provide added convenience for those shopping in the Central Business District.